



Antrim Boat Club - Winter Series 2023/24

sponsored by Rolo's

Sailing Instructions

1. Organising Authority

This event will be organised by Antrim Boat Club.

2. Rules and Eligibility


Racing will be governed by the latest ISAF Racing Rules of Sailing (RRS) RYA prescriptions
Eligible boats in Fleet 2 are those which comply with the definition of a cruiser in the ICRA constitution.

No safety cover is provided by the Organising Authority.

3. Classes

There will be one class for all boats. ABC accepts the following types of boats to enter:

- Sports boats / Keel Boats with an IRC Handicap band of .900 or greater.
- Cruisers with an ABC Club Handicap of up to .899.

Class Flag 'V' victor 

Entrants must declare which if they are 'Spinnaker' or 'Whitesail' at registration. 'Whitesail' boats will be given a 3% reduction from their ABC Club Handicap.

4. Schedule of Races

The 15-race series will be split in two parts consisting of 6 races in the first part and 9 races in the second part. Races are scheduled on consecutive Sundays with the first part beginning 5th November 2023 and running to 10th December 2023. The second part will resume on the 28th January 2024 and run to 23rd March 2024 (Saturday). The Starting signal will be at 2.30 pm on each day. The race area will be Antrim Bay, Lough Neagh. An extra race may be scheduled at the end of the either part if the number of races sailed is not enough to constitute a series. A charity race may be held on the following Sunday or the next weekend depending on preference

5. Discards

4 races must be completed in each part to constitute a series. A discard will apply in each part only if 5 races are sailed, 2 discards only if 7 races are sailed and 3 discards if 9 races are sailed. I.e. there is 1 discard in the first part of at least 5 races and 3 discards in the second part of at least 9 races. In the complete competition of two parts the number of discards will be the same as the total of both parts, but not necessarily the same races. i.e., the discards are those most beneficial to the boat of the total sailed.

6. Notices to competitors

Notices to competitors shall be posted on the official notice board located in the clubhouse.

7. Changes to Sailing Instructions

Any changes to the S.I. s will be posted not later than one hour prior to the scheduled start of the first race of the day it will take effect.

8. Time Limits

The time limit for the first boat to finish shall be 90 minutes provided that 3 legs of the course (if it's a triangle course) have been sailed. If no boat completes the course within the time permitted the race will be declared void and shall not be re-sailed. When a boat completes the course within the time limit, all other boats in that class will be granted a further 30 minutes from that time to complete the course. Any boats which fail to complete the course will be deemed to have retired.

9. Starting/Finishing

The Start/Finish Line will be between the flag mast of the committee boat and a race mark. When the start line is set an orange flag will be displayed and when the boat is in position at the finishing line a blue flag will be displayed.

9.1 Starting Sequence

The Start sequence may be accompanied by sound signals and will be as follows (Rule 26)

5 Minute warning: Class flag raised

4 Minute warning: 'P' (Papa) or 'I' (India) flag, or Black flag raised

1 Minute warning: 'P' or 'I' flag lowered

Start: Class flag lowered

Individual Recall: 'X' Flag, displayed after Start accompanied by 1 sound signal

General Recall : '1st substitute' flag displayed after Start accompanied by multiple sound signals

If 'I' flag is hoisted at the 4 minute, then the round the ends rule RRS 30.1 will apply from one minute before the start. A Black flag, (disqualified for boats over the line in the last minute)

9.1.1. Finishing:

The Finishing Line will be between the signal flag mast of the committee boat and a race mark. Fleet flag(s) and Blue flag (Committee boat in position at the finishing line) will be displayed.

When the committee boat is in position at the finishing line only then will a blue flag will be displayed. i.e. If a blue flag is not displayed another lap is required.

9.2. Shortened Course

In the event of a course being shortened the Committee Boat will take up position at a chosen race mark, or lay a new mark. This new Finish line will be signalled by sound signals and display flag 'S' *Sierra*. (RRS 32.1) + Fleet flag(s) and the Blue flag.

10. Scoring

The low point scoring system in RRS Appendix A4.1 will apply. A boat that does not finish shall score points in accordance with Rule A4.2.

11. Penalties

- a. The two turn penalty as provided in RRS 44.1 and 44.2 shall apply for an infringement of a rule under part 2 (boats meeting)
- b. The one turn penalty as provided for in RRS 44.1 and 44.2 shall apply for an infringement of a rule under rule 31 (touching mark)

12 EVENT ADVERTISING

Boats shall display event advertising, if required, supplied by the organizing authority.

INFORMATION FOR COMPETITORS**A. Responsibility**

Antrim boat club, its Officers, sponsors and agents, accept no responsibility for any damage to boats or for personal injury occurring while afloat. Competitor's attention is drawn to RRS Fundamental Rule 4, especially in relation to races being run in adverse conditions.

B. Security

All competitors should note the necessity to secure their valuables before going afloat

C. Membership

All competitors will be granted Temporary Membership of Antrim Boat Club for the duration of the event.

D. Weather Forecast

Weather forecast may be posted on the Notice Board

Protests

In addition to the obligations in RRS 61 protesting boats shall, immediately after finishing, inform the RO of the sail number(s) or name of boats protested against in that race. Protest forms will be available from the Race Office and all protests shall be delivered to the Race Office within Protest Time. The protest time limit is 60 minutes after the last boat has finished the last race of the day. This changes rule 61.3. Where the parties to a protest are available and are willing to commence the hearing before the expiry of the time limit, the Race Committee should facilitate that process. A schedule of Protest hearings will be posted on the notice board as soon as practicable each day. A charge of £15.00 is to be lodged with each protest, which will be returned if the protest is not deemed to be frivolous by the Protest Committee.

Courses

Prior to the warning signal the Race committee will display a flag to designate the type of course to be sailed. A long sound signal will be made when the flag is displayed or when the course type is changed.

When numeral pennant 1 is displayed a Windward/Leeward course will be sailed

When numeral pennant 2 is displayed a Triangular course will be sailed

When numeral pennant 3 is displayed a Figure 4 course will be sailed

When numeral pennant 4 is displayed a Slalom course will be sailed

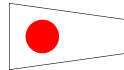
Boats shall pass between the committee boat (or its substitute mark) and the Start/Finish mark when sailing to mark 1. where it is described as the Gate in the courses listed below.

The Committee boat will display a coloured flag to denote whether a Starboard hand (green flag) or Port hand (red flag) course is to be sailed. All marks will be rounded in this direction with the exception of mark 3 on the Figure 4 course and Slalom courses.

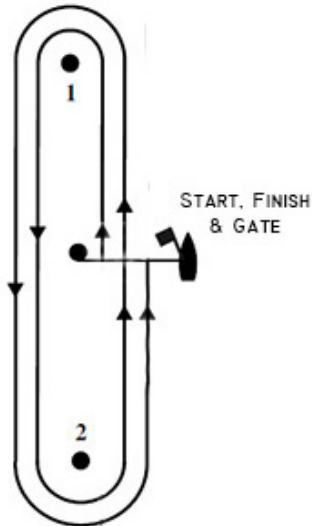
At the race finish a blue rectangular flag will be displayed on the Committee Boat to denote the boat is in position at the finishing line

All courses may be shortened if conditions dictate by finishing at an alternative finishing line. (Flying S flag and blue finish flag) rule 32

Windward Leeward course. Pennant No 1



START-1-2-GATE-1-2-FINISH



Options

- (1) increase or decrease the number of laps,
- (2) use the leeward and windward marks as starting and finishing marks.

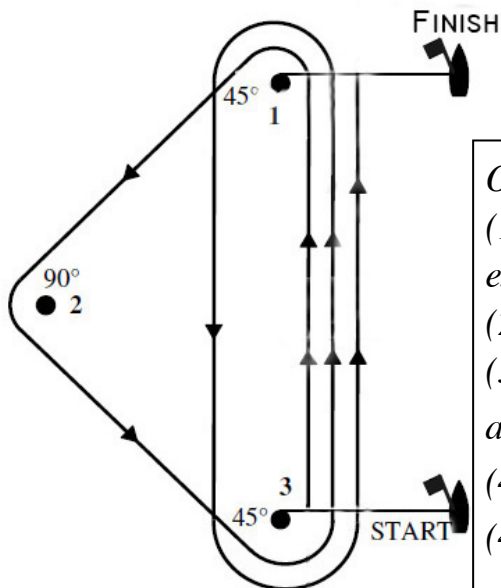
Olympic Triangle Course. Pennant No 2



START-1-2-3--1-3--1-2-3-FINISH

START-TRIANGLE-SAUSAGE-TRIANGLE-FINISH

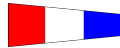
(Lengthened course, additional Sausage leg 1-3-Finish)



Options

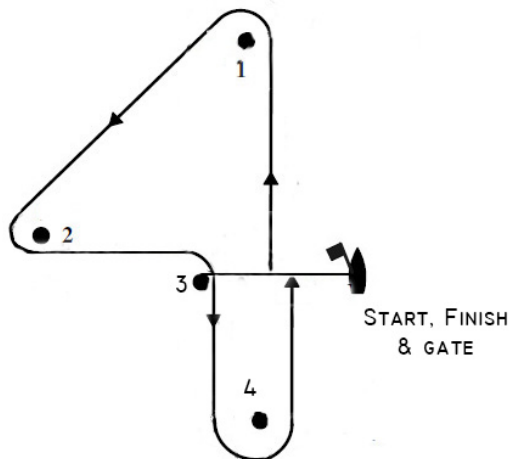
- (1) Increase the number of laps, by adding an extra leeward & windward leg.
- (2) Decrease the number of laps (min. is 3 legs.)
- (3) Shorting the course by finishing at an alternative finishing line.
- (4) Varying the interior angles of the triangle - (45°-90°-45° and 60°-60°-60° are common)

Figure 4 Course. Pennant No 3



The marks of the course will be placed roughly as displayed and will be rounded in the following order.

START-1-2-3-4-GATE-1-2-3-4-FINISH



Options

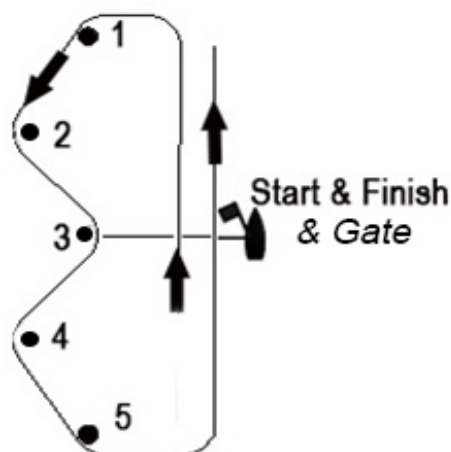
- (1) *increase the number of laps,*
- (2) *using the leeward and windward marks as starting and finishing marks.*

Slalom Course. Pennant No 4



The marks of the course will be placed roughly as displayed and will be rounded in the following order.

Course: 1,2,3,4,5,Gate, 1,2,3,4,5,Finish



Options

- (1) *increase the number of laps,*
- (2) *using the leeward and windward marks as starting and finishing marks*